

# PKU squeezeie®

ACBS  GMS  PBS

## Description

### Food for special medical purposes.

PKU squeezeie is an apple & banana flavoured ready-to-feed phenylalanine free\* protein substitute containing essential and non-essential amino acids, carbohydrate, sugar, vitamins, minerals, trace elements, arachidonic acid (ARA) and docosahexaenoic acid (DHA).

## Indications

PKU squeezeie is for use in the dietary management of Phenylketonuria (PKU) from 6 months to 10 years of age.

## Dosage and Administration

To be determined by the clinician or dietitian and is dependent on the age, body weight and medical condition of the patient.

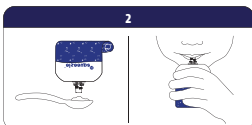
PKU squeezeie (85g) = 10g PE

1. The daily protein substitute requirement is given as PKU squeezeie.
2. Additional protein is provided from exchanges of natural protein, to provide phenylalanine in controlled amounts, which is essential for growth and development.
3. Foods high in carbohydrate and fat, but low in protein, should be provided to supply the remainder of the energy.

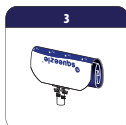
## Preparation Guidelines



Shake well.



Consume from spoon or direct from pouch.



Roll and squeeze to empty pouch.

Water or permitted drinks should be taken after PKU squeezeie

## IMPORTANT NOTICE

Must only be consumed by children with proven PKU under strict medical supervision.

Diet must be supplemented with natural protein, water and other nutrients in prescribed quantities to supply the phenylalanine, fluid and general nutritional requirements.

Not for use as a sole source of nutrition.

For enteral use only.

## Nutritional Information

		per 100g	per 85g pouch			per 100g	per 85g pouch
Energy	kJ	668	563	Magnesium	mg	47	40
	kcal	157	133		mmol	1.9	1.6
Fat	g	0.6	0.5	Iron	mg	4.0	3.4
	of which saturates	g	0.18	0.15	Zinc	mg	3.1
Carbohydrate	g	26	22	Copper	mg	0.22	0.19
	of which sugars	g	16	13	Iodine	µg	39
Fibre	g	0.3	0.26	Selenium	µg	10	8.5
Protein equivalent	g	12	10	Manganese	mg	0.48	0.41
L-Phenylalanine*	g	0	0	Chromium	µg	20	17
Salt	g	0.27	0.23	Molybdenum	µg	14	12
<b>Vitamins and minerals</b>				<b>Others</b>			
Vitamin A (RE)	µg	170	140	Choline	mg	79	67
Vitamin D	µg	4.1	3.5	DHA	mg	74	63
Vitamin E (αTE)	mg	2.6	2.2	ARA	mg	148	126
Vitamin K	µg	12	10	<b>Amino acids</b>			
Vitamin C	mg	18	15	L-Alanine	g	0.49	0.42
Thiamin	mg	0.28	0.24	L-Arginine	g	0.80	0.68
Riboflavin	mg	0.34	0.29	L-Aspartic Acid	g	1.27	1.08
Vitamin B6	mg	0.30	0.26	L-Cystine	g	0.32	0.27
Niacin	mg	4.0	3.4	L-Glutamine	g	0.00	0.00
	(mg NE) (8.5)	(7.2)		Glycine	g	1.26	1.07
Folic acid	µg	59	50	L-Histidine	g	0.49	0.42
Vitamin B12	µg	0.56	0.48	L-Isoleucine	g	0.87	0.74
Pantothenic acid	mg	1.4	1.2	L-Leucine	g	1.36	1.16
Biotin	µg	7.1	6.0	L-Lysine	g	0.89	0.76
				L-Methionine	g	0.24	0.20
Sodium	mg	107	91	L-Phenylalanine	g	0.00	0.00
	mmol	4.6	3.9	L-Proline	g	0.91	0.77
Chloride	mg	164	139	L-Serine	g	0.56	0.48
	mmol	4.6	3.9	L-Threonine	g	0.88	0.75
Potassium	mg	260	220	L-Tryptophan	g	0.27	0.23
	mmol	6.5	5.5	L-Tyrosine	g	1.28	1.09
Calcium	mg	310	260	L-Valine	g	1.00	0.85
	mmol	7.8	6.6	L-Carnitine	mg	13	11
Phosphorus	mg	230	200	Taurine	mg	26	22
	mmol	7.4	6.3				

\* No added phenylalanine. Phenylalanine may be present in trace amounts from other ingredients (<10mg/100g)

**Osmolality:**  
2240mOsm/kg

### Storage

Store in a cool, dry place.

Once opened consume immediately or recap, refrigerate and use within 24 hours.

### Pack Size/Weight

30 x 85g e sachets = 2.55kg

### Flavour

Apple and banana

